

115 YEARS OF QUALITY & SATISFACTION



# ProGuard Series

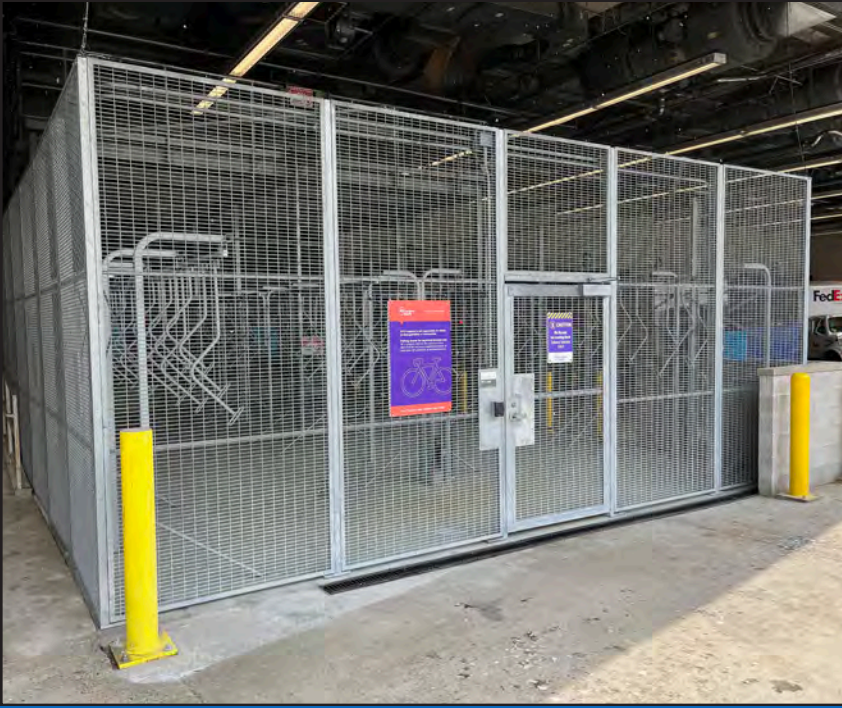
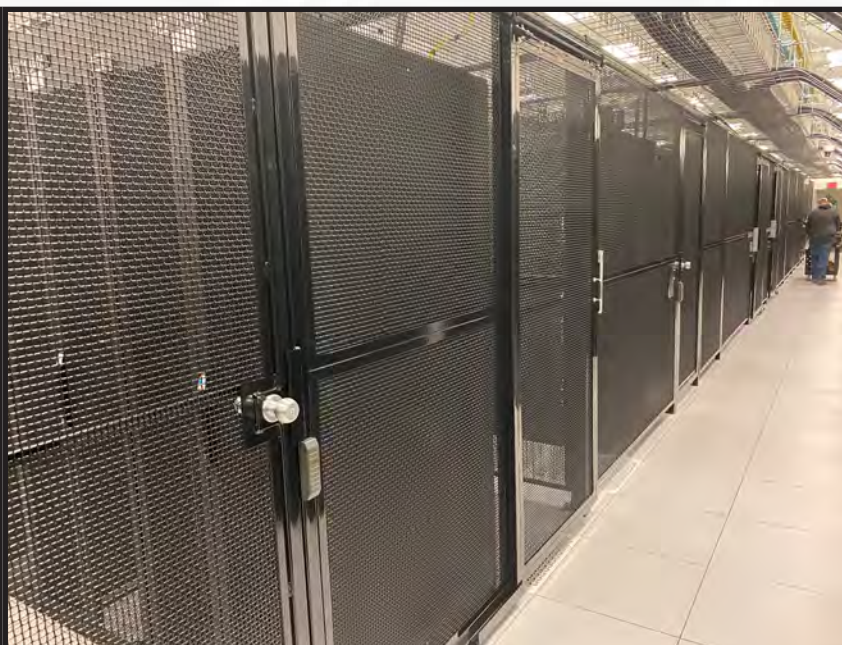


**WIRE MESH  
PARTITIONS**



# PROGUARD SERIES | WIRE MESH PARTITIONS

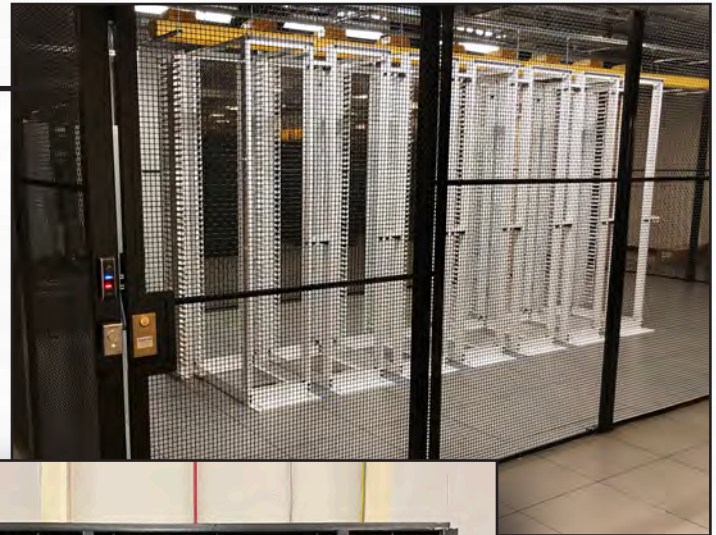
**ProGuard Series:** Wire mesh partitions are the ultimate solution for secure and visually appealing storage. Designed with unmatched rigidity and quality, the ProGuard brand features angle-framed wire mesh partitions that excel in both durability and aesthetics. Available in standard and customized options, these partitions are perfect for industrial environments, warehouses, and commercial spaces. Contact our dedicated sales professionals today to discuss your project needs!



## Common Applications

### Data Centers

Our wire partition cages for data centers offer secure, customizable enclosures to protect sensitive servers and equipment. Designed for durability and airflow, they enhance security while maintaining optimal performance and compliance.



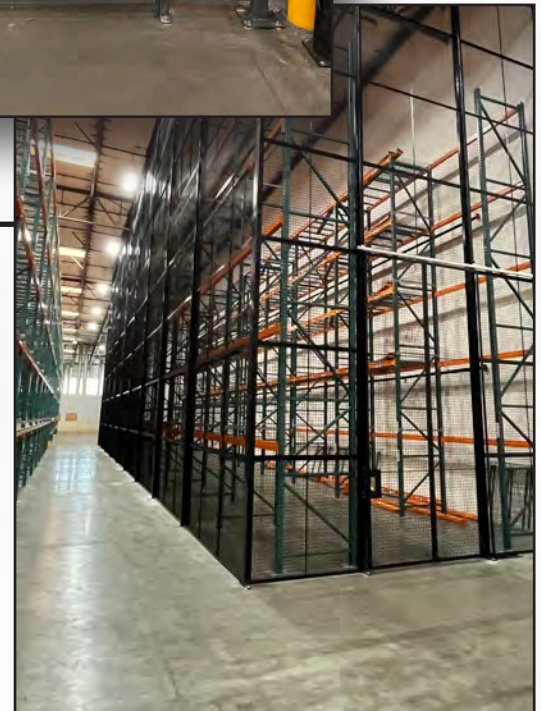
### Driver Access cages

Our driver access cages, also known as trucker cages, provide secure entry points for warehouses and distribution centers. These durable enclosures restrict access to authorized personnel, enhancing security and operational control.



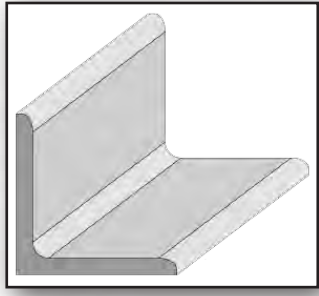
### DEA / Cannabis / Aerosol Cages

Our wire partition cages provide secure, compliant storage solutions for DEA, Aerosol, and cannabis facilities. Built with durable materials, they meet regulatory requirements while ensuring maximum protection and visibility for controlled substances.



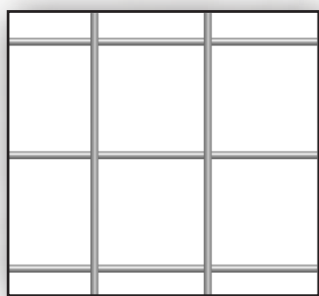
# PROGUARD SERIES | WIRE MESH PARTITIONS

## Standard Construction:



1 1/4" x 1 1/4" x 1/8" thick angle iron

(1 1/2" x 1 1/2" x 1/8" angle iron also available)



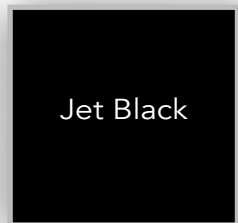
10GA. 2" x 2" square welded wire mesh

(Many other options available)

## Standard Paint & Powder Coat options:



Battleship Gray



Jet Black

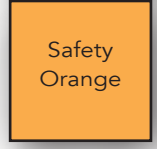
## Additional Paint & Powder Coat options:



Safety Yellow



Safety Blue



Safety Orange



Brite White

(Powder-coat only)

Custom colors available

## Standard Product Specifications:

### Standard Panels:

Panels are constructed from 10-gauge 2" x 2" square welded wire mesh, and securely welded to a 1-1/4" x 1-1/4" x 1/8" steel angle frame. The frames feature 1" x 5/16" slotted holes for easy mounting to vertical posts or directly to adjoining panels. Panels measuring four to seven feet in width include a single 1/4" x 3/4" flat bar stiffener welded vertically to top and bottom of framing, large panels are reinforced with two vertical stiffeners.

### Vertical & Corner Posts:

Posts are constructed of 2" x 2" x 14 gauge steel tubing which has 2" x 7" x 1/4" thick steel base plates welded to bottom of tube. Base plate are punched out with 7/16" round holes for mounting to the flooring.

### Hinged Doors:

Doors are constructed from 10-gauge 2" x 2" square welded wire mesh, and securely welded to a 1-1/4" x 1-1/4" x 1/8" steel angle frame. Welded horizontal stiffeners constructed of 1/4" x 3/4" steel flat bar fit both below and above lockset. Three 4" tall x 3" wide x 11 gauge fixed pin butt hinges are then welded to vertical frame of door, and also welded to a full height 1-1/4" x 5/8" "C" channel (hinge bar).

### Sliding gates:

Sliding gates are constructed from 10-gauge 2" x 2" square welded wire mesh, and securely welded to a 1-1/4" x 1-1/4" x 1/8" steel angle frame. Welded horizontal stiffeners constructed of 1/4" x 3/4" steel flat bar fit both below and above lockset.

### Locks Options:

#### ◆ Hinged doors:

Padlock hasp, standard. Marks 3700 Series lockset, cylindrical lever lockset, panic bar, electro-magnetic lock, and electric strike options also available.

#### ◆ Sliding gates:

Padlock hasp, standard Marks 3800 Series lockset, electro-magnetic lock, and electric strike options also available.

### Hardware:

1/4 20 x 3/4" carriage bolts, 1/4" hammer drive floor anchors, and 1 1/4" hex washer head tex self drilling screws. Tamper-resistant torx security screws available upon request

### Finish Options:

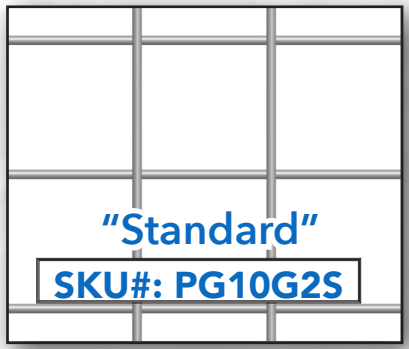
Electrostatic painted enamel, standard. Polyester powder coat, and hot dip galvanized.

# PROGUARD SERIES | WIRE MESH PARTITIONS

## Wire Mesh / Expanded metal / Sheet metal Options:

We offer a wide variety of additional styles of both welded and woven wire meshes. Please see below for a type of wire mesh that fits your project or specification best. We also offer custom wire mesh styles depending on your needs.

**Note: (Wire mesh sizes are not to scale. please ask for a sample or accurate scaled pictures )**



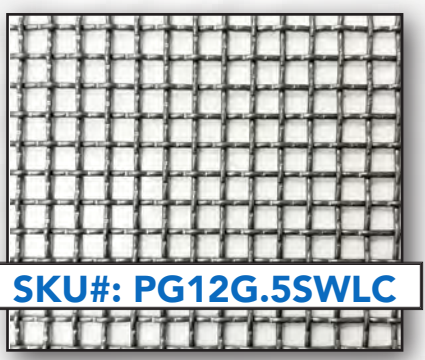
10GA 2" x 2" Welded Square wire mesh



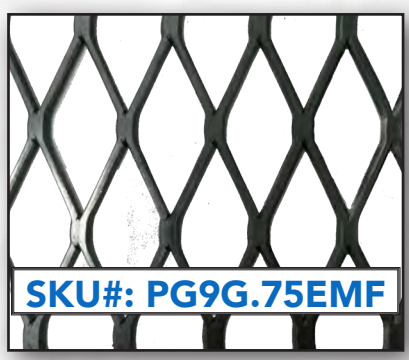
10GA 1 1/2" Diamond woven Intercrimp



10GA 2" x 1" Rectangular Woven, Intercrimp



12GA 1/2" x 1/2" (centers) Square woven mesh, lockcrimp



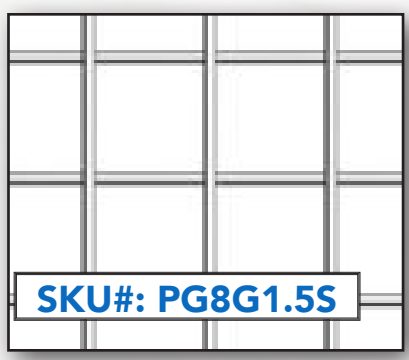
9GA. 3/4" Flattened Expanded Metal (Other sizes & guages available)



6GA 2" Diamond woven mesh Intercrimp



16GA Sheet Metal



8GA 1 1/2" x 1 1/2" square welded wire (Aerosol)



8GA 2" Square woven Lock-crimp

**Custom Wire Mesh / Expanded metal / Sheet Metal options available.**

## Hinged Dook Lock Options:

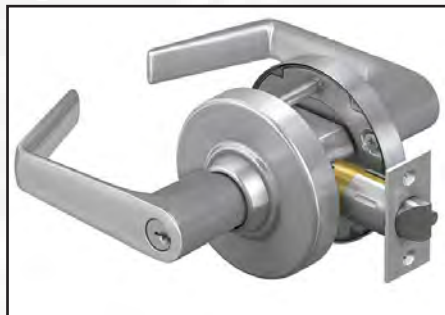
### Padlock Hasp



"Standard"

- A padlock hasp for wire mesh partitions delivers durable, cost-effective security and ensures easy installation for reliable protection.

### Schlage ND80 Series Cylindrical Lockset



- Meets ADA requirements
- Available standard in storeroom function; other functions are available.



Front

Back

### Marks 3700 Series Lockset

Mortise locksets provide enhanced security, versatile access control with interchangeable cores, and can be upgraded for ADA compliance with an interior lever.

Other lock options available (see page 7).

### Marks 9900 Series Panic / Push Bar



- Meets ADA requirements
- Standard for egress applications

### HES 9400 / 9600 Electric strikes

- Fail secure (Standard)  
Fail safe option available upon request.
- Standard 24 volt DC power. 12 Volt DC available upon request.
- Ideal for secured entry, badge in / out, fully customizable to fit onsite access control systems.



## Sliding Gate Lock Options:

### Padlock Hasp



"Standard"

- A padlock hasp for wire mesh partitions delivers durable, cost-effective security and ensures easy installation for reliable protection.

### Electro-Magnetic Lockset



DynaLock 2280 Mag Lock

- Ability to tie into fire system
- 1200 Lbs. holding force
- Access to monitor and operate through access control system with door monitor switch.

### Mortise Lockset



### Marks 3800 Series Lockset

Mortise locksets provide enhanced security, versatile access control with interchangeable cores, and can be upgraded for ADA compliance with an interior lever.

Other lock options available (see page 7).

### Sliding Gate - Electric strike



NorVik - Electric strike

- Fail secure, (Standard). Fail safe available upon
- Specifically design for wire mesh sliding gates
- Access to monitor and operate through access control system
- Card reader mounting plate fully intergrated

# MARKS LOCKSET SETUP OPTIONS



## Standard Exterior

### Key Lock

Key operates the interior mechanism and retracts the tongue or latch to unlock and open the door.



## Standard Interior

### Recessed Thumb Turn

Recessed thumb turn adds a adds a layer of security. Hard to pick..

## Alternate Fronts



**Thumb Turn Latch**  
(Latches, Does not lock)

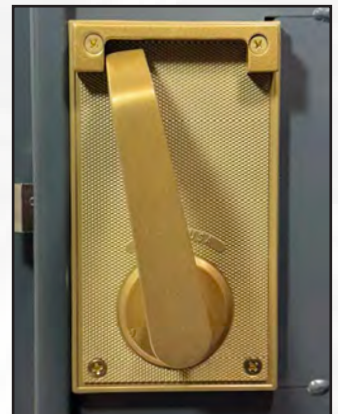


**Cylinder W/ I.C Core**  
(Latches, locks)  
(small format, 6-7 pin)

## Alternate Backs



**Interior Door knob**  
(Latches, Locks)



**Interior Lever Handle**  
(Latches, Locks)  
ADA Compliant



**Exterior Door Knob**  
(Latches, Does not lock)



**Interior Key**  
(Latches, Locks)



# PROGUARD SERIES | WIRE MESH PARTITIONS

## Mesh SKU#PG220S Standard Duty Product Specification / Cut Sheet:

Mesh: <b>Standard</b>			
Type:	10ga. (.135) plain steel, 2" square welded wire mesh. Mesh is welded to angle iron frame. Mesh SKU #PG220		
Wall panels :			
Vertical frame :	1 1/4" x 1 1/4" x 1/8" angle		
Horizontal frame :	1 1/4" x 1 1/4" x 1/8" angle		
Mid-rail :	3/4" x 1/4" flat iron		
Hinged Doors:			
Vertical frame :	1 1/4" x 1 1/4" x 1/8" angle		
Horizontal frame :	1 1/4" x 1 1/4" x 1/8" angle		
Mid-rail :	3/4" x 1/4" flat iron		
Lock:	Marks 3700 series		
Sliding gates:			
Vertical frame :	1 1/4" x 1 1/4" x 1/8" angle		
Horizontal frame :	1 1/4" x 1 1/4" x 1/8" angle		
Mid-rail :	3/4" x 1/4" flat iron		
Lock:	Marks 3820 series		
Larger height partition stiffening posts:			
Tube:	2" x 2" x 14ga. steel tube	Heights:	7'-0" - 18'- 0"
Tube:	2" x 3" x 14ga. steel tube	Heights:	18'- 1" - 24'- 0"
Tube:	2" x 4" x 14ga. steel tube	Heights:	24'-1" - 30'-0"
Tube:	2" x 6" x 14ga. steel tube	Heights:	30'-1" - 40'-0"
Line Posts:			
Standard:	3"x1 1/2" x 11ga. Steel channel with bolt holes to match panel & welded base plate w/ 4 holes for anchors into flooring		
above 8ft:	3"x3"x11ga. Steel square tube with 8"x8"x1/4" welded base plate with 4 holes with 3/8" diameter wedge anchors into concrete floor		

# PROGUARD SERIES | WIRE MESH PARTITIONS

## Mesh SKU#PG215DW Standard Duty Product Specification / Cut Sheet:

Mesh:			
Type:	10ga. (.135) plain steel, 1 1/2" diamond shaped woven wire mesh. Mesh is welded to angle iron frame. Mesh SKU #PG215		
Wall panels :			
Vertical frame :	1 1/4" x 1 1/4" x 1/8" angle		
Horizontal frame :	1 1/4" x 1 1/4" x 1/8" angle		
Mid-rail :	3/4" x 1/4" flat iron		
Hinged Doors:			
Vertical frame :	1 1/4" x 1 1/4" x 1/8" angle		
Horizontal frame :	1 1/4" x 1 1/4" x 1/8" angle		
Mid-rail :	3/4" x 1/4" flat iron		
Lock:	Marks 3700 series		
Sliding gates:			
Vertical frame :	1 1/4" x 1 1/4" x 1/8" angle		
Horizontal frame :	1 1/4" x 1 1/4" x 1/8" angle		
Mid-rail :	3/4" x 1/4" flat iron		
Lock:	Marks 3820 series		
Larger height partition stiffening posts:			
Tube:	2" x 2" x 14ga. steel tube	Heights:	7'-0" - 18'- 0"
Tube:	2" x 3" x 14ga. steel tube	Heights:	18'- 1" - 24'- 0"
Tube:	2" x 4" x 14ga. steel tube	Heights:	24'-1" - 30'-0"
Tube:	2" x 6" x 14ga. steel tube	Heights:	30'-1" - 40'-0"
Line Posts:			
Standard:	3"x1 1/2" x 11ga. Steel channel with bolt holes to match panel & welded base plate w/ 4 holes for anchors into flooring		
above 8ft:	3"x3"x11ga. Steel square tube with 8"x8"x1/4" welded base plate with 4 holes with 3/8" diameter wedge anchors into concrete floor		

# PROGUARD SERIES | WIRE MESH PARTITIONS

## Mesh SKU#PG-HD62DW Heavy Duty Product Specification / Cut Sheet:

Mesh: <b>Heavy Duty</b>			
Type:	6ga. (.192) plain steel, 2" diamond shaped woven wire mesh. Mesh is welded to angle iron frame. Mesh SKU #PG-HD62D		
Wall panels :			
Vertical frame :	1 1/2" x 1 1/2" x 1/8" angle		
Horizontal frame :	1 1/2" x 1 1/2" x 1/8" angle		
Mid-rail :	1" x 1/4" flat iron		
Hinged Doors:			
Vertical frame :	1 1/2" x 1 1/2" x 1/8" angle		
Horizontal frame :	1 1/2" x 1 1/2" x 1/8" angle		
Mid-rail :	1" x 1/4" flat iron		
Lock:	Marks 3700 series		
Sliding gates:			
Vertical frame :	1 1/2" x 1 1/2" x 1/8" angle		
Horizontal frame :	1 1/2" x 1 1/2" x 1/8" angle		
Mid-rail :	1" x 1/4" flat iron		
Lock:	Marks 3820 series		
Larger height partition stiffening posts:			
Tube:	2" x 2" x 14ga. steel tube	Heights:	7'-0" - 18'- 0"
Tube:	2" x 3" x 14ga. steel tube	Heights:	18'- 1" - 24'- 0"
Tube:	2" x 4" x 14ga. steel tube	Heights:	24'-1" - 30'-0"
Tube:	2" x 6" x 14ga. steel tube	Heights:	30'-1" - 40'-0"
Line Posts:			
Standard:	3"x1 1/2" x 11ga. Steel channel with bolt holes to match panel & welded base plate w/ 4 holes for anchors into flooring		
above 8ft:	3"x3"x11ga. Steel square tube with 8"x8"x1/4" welded base plate with 4 holes with 3/8" diameter wedge anchors into concrete floor		



# PROGUARD SERIES WIRE PARTITIONS

## QUOTE FORM

SKETCH / DRAW & SEND

Please send via email to [sales@newarkwireworks.com](mailto:sales@newarkwireworks.com) or fax to (732)-661-2003. You may also submit online through our product page by attaching this sheet to contact form. Fill out as much information as you can. Any questions please do not hesitate to reach out to one of our experienced Sales Reps via phone at **1-(866)-347-1910**.

NAME:		COMPANY:	
STREET, CITY, STATE, & ZIP CODE:			
PHONE:		EMAIL ADDRESS:	
PROJECT NAME:		PROJECT ADDRESS:	
NEED INSTALLATION?: <input type="checkbox"/> Yes <input type="checkbox"/> No		ESTIMATED TIMEFRAME NEEDED?	

<b>PARTITION</b> <input type="checkbox"/> Standard 7' - 0" high <input type="checkbox"/> Standard 8' - 0" high <input type="checkbox"/> 9' - 0" high <input type="checkbox"/> 10' - 0" high <input type="checkbox"/> Other: _____ <small>(please specify)</small>	<b>SWEEP</b> <input type="checkbox"/> Standard ( 3") <input type="checkbox"/> Other: _____ <small>(please specify)</small>	<b>LOCKS:</b> <input type="checkbox"/> Padlock Hasp <input type="checkbox"/> Standard Cylinder lock, keyed <input type="checkbox"/> Alike <input type="checkbox"/> Different <input type="checkbox"/> Electric Strike <input type="checkbox"/> Maglock <input type="checkbox"/> Other: _____ <small>(please specify)</small>	<b>FINISH:</b> <input type="checkbox"/> Electrostatic Painted Enamel <input type="checkbox"/> Battleship gray (Standard) <input type="checkbox"/> Jet Black (Standard) <input type="checkbox"/> Safety Yellow <input type="checkbox"/> Safety Blue <input type="checkbox"/> Safety Orange <input type="checkbox"/> Brite White - (custom charge) <input type="checkbox"/> Powder Coat RAL# - _____ <input type="checkbox"/> Hot Dip Galvanized - (Best for outdoor / Exterior applications)
---	---	---	---

<b>MESH TYPE:</b> <input type="checkbox"/> 10 GA. 2" Square welded wire mesh ( SKU # - PG220S ) "STANDARD" <input type="checkbox"/> 10 GA. 1 1/2" Diamond woven wire mesh ( SKU # - PG215DW ) <input type="checkbox"/> 10 GA. 2" X 1" Rectangular woven wire mesh ( SKU # - PG221RW ) <input type="checkbox"/> Other: _____ <small>(please specify)</small>	<b>FRAMING TYPE:</b> <input type="checkbox"/> 1 1/4" x 1 1/4" x 1/8" Angle Iron "STANDARD" <input type="checkbox"/> 1 1/2" X 1 1/2" X 1/8" Angle Iron ( Heavy Duty ) <input type="checkbox"/> Other: _____ <small>(please specify)</small>	<b>TAMPER PROOF HARDWARE:</b> <input type="checkbox"/> Yes <input type="checkbox"/> No
--	--	--

--



# PROGUARD SERIES WIRE PARTITIONS

## QUOTE FORM

SKETCH / DRAW & SEND

Please send via email to [sales@newarkwireworks.com](mailto:sales@newarkwireworks.com) or fax to (732)-661-2003. You may also submit online through our product page by attaching this sheet to contact form. Fill out as much information as you can. Any questions please do not hesitate to reach out to one of our experienced Sales Reps via phone at **1-(866)-347-1910**.